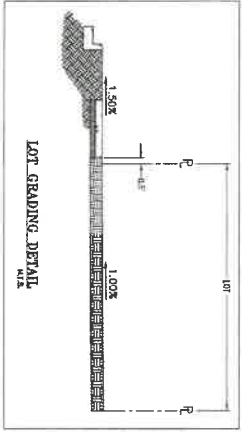
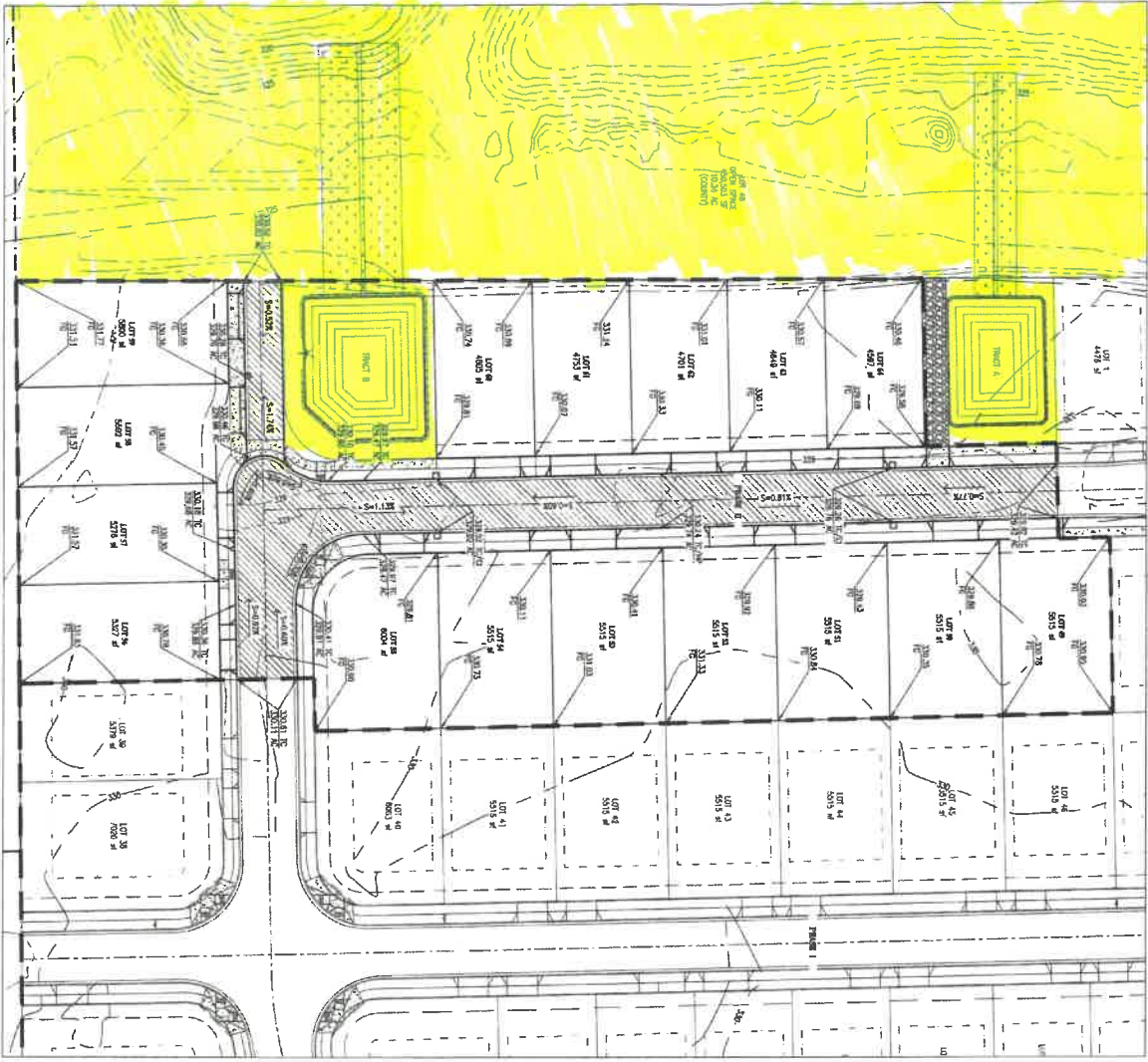
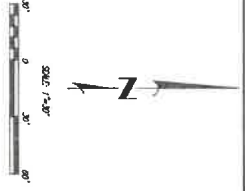


ASSUMPTIONS MADE: 12/20/19 10:38 AM 21.000



- GRADING NOTES:**
1. ALL POSITIVE FINISH FLOOR ELEVATIONS SHALL BE SHOWN IN RED ABOVE BASE FLOOR FINISH ELEVATION.
 2. CONSTRUCTION OF INTERIOR IN LOT AREAS TO BE INDICATED AND CERTIFIED BY A GEOTECHNICAL PROFESSIONAL.
 3. ALL EROSION MEASURES OBTAINED IN APPROVED AND TEST REPORT SHALL BE APPLIED FROM TO THE DESIGN.
 4. STREPPINGS SHALL BE SPREAD INSIDE OF NON-STRUCTURAL AREAS.
 5. CURB GRADES ARE SHOWN ON THIS SHEET ARE FOR INFORMATION ONLY. CONTRACTOR SHALL USE PROFILES SHEETS FOR CONSTRUCTION.
 6. ALL LOTS TO HAVE POSITIVE GRADE TOWARD STREET FRONTAGE. SEE DETAIL ON THIS SHEET.



SHEET
C-2.2
of
12

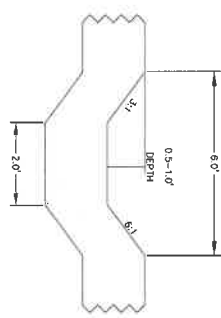
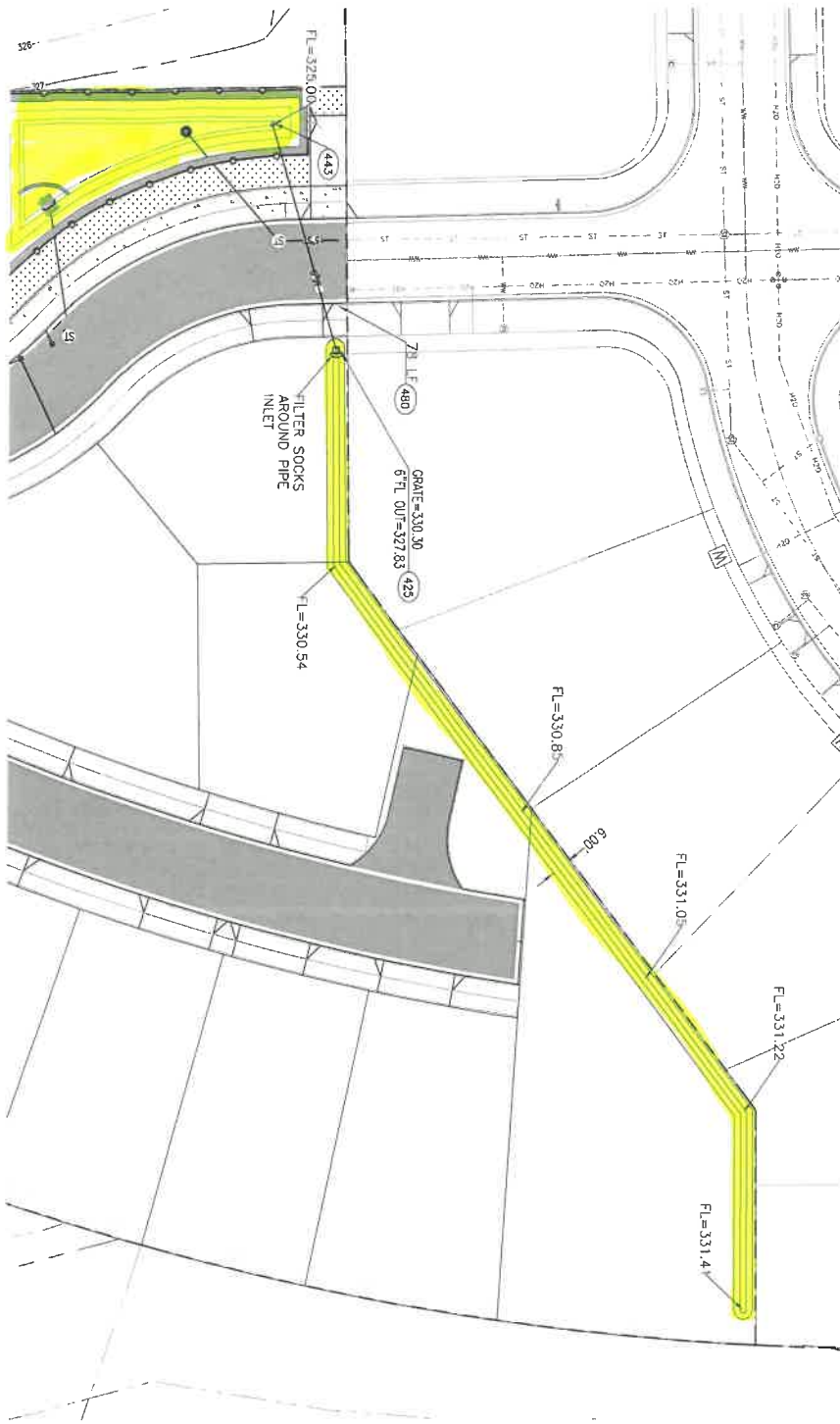
REVISIONS:

DATE: PROJECT No. 1172
 SCALE: 1"=60'
 DESIGNED BY: JCH
 REVIEWED BY: JCH
 REVIEWED BY: SEM
 COA:

Comprehensive Grading Plan
 for
River's Edge Subdivision
 Brownsville Linn County Oregon



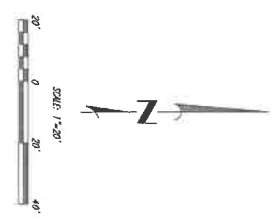
A & O Engineering L.L.C.
 CONSULTING ENGINEERS &
 SITE DEVELOPMENT PLANNING
 388 Q ST. SUITE 300
 SPRINGFIELD, OH 45502
 PHONE: 614.296.7700
 FAX: 614.296.7701



- ST CONSTRUCTION NOTES**
- 425. OMSI COMPLETE PIPING INLET PER CITY OF SPRINGFIELD
 - 426. OMSI COMPLETE PIPING INLET PER CITY OF SPRINGFIELD
 - 427. OMSI COMPLETE PIPING INLET PER CITY OF SPRINGFIELD
 - 428. OMSI COMPLETE PIPING INLET PER CITY OF SPRINGFIELD
 - 429. OMSI COMPLETE PIPING INLET PER CITY OF SPRINGFIELD
 - 430. OMSI COMPLETE PIPING INLET PER CITY OF SPRINGFIELD
 - 431. OMSI COMPLETE PIPING INLET PER CITY OF SPRINGFIELD
 - 432. OMSI COMPLETE PIPING INLET PER CITY OF SPRINGFIELD
 - 433. OMSI COMPLETE PIPING INLET PER CITY OF SPRINGFIELD
 - 434. OMSI COMPLETE PIPING INLET PER CITY OF SPRINGFIELD
 - 435. OMSI COMPLETE PIPING INLET PER CITY OF SPRINGFIELD
 - 436. OMSI COMPLETE PIPING INLET PER CITY OF SPRINGFIELD
 - 437. OMSI COMPLETE PIPING INLET PER CITY OF SPRINGFIELD
 - 438. OMSI COMPLETE PIPING INLET PER CITY OF SPRINGFIELD
 - 439. OMSI COMPLETE PIPING INLET PER CITY OF SPRINGFIELD
 - 440. OMSI COMPLETE PIPING INLET PER CITY OF SPRINGFIELD
 - 441. OMSI COMPLETE PIPING INLET PER CITY OF SPRINGFIELD
 - 442. OMSI COMPLETE PIPING INLET PER CITY OF SPRINGFIELD
 - 443. OMSI COMPLETE PIPING INLET PER CITY OF SPRINGFIELD

GENERAL NOTES

REFER TO DRAWING FROM PROPERTY LINE TO PROJECT STARTING POINTS.



SHEET C-10	PROJECT No. 5311
	DRAWN BY: KRC
	REVIEWED BY: SSM
	PROJECT DATES:

Swale Detail
 for
 Rivers Edge Phase 3
 Brownsville Linn County Oregon



A & O Engineering L.L.C.
 CIVIL ENGINEERING & SITE DEVELOPMENT CONSULTING
 310 O ST. SUITE 200
 SPRINGFIELD, OR 97177
 PHONE (541) 322-7700
www.aandoe.com